

4 Way Medium Power Broadband Combiner

From 2 GHz to 6 GHz Rated at 500 Watts

TECHNICAL DATA SHEET

AMPC 4 - 500N

AMPC 4 - 500N is a passive 4 way medium Power Broadband RF Combiner with 50 ohm N connectors operating from 2000 MHz to 6000 MHz, with a max output power 500W.

AMPC 4 - 500N has been designed to operate in harsh environment. The RF Combiner operates in a temperature range from -55°C to 85°C, with a foot print of 120 x130 x 39 mm.

Features:

- 2 GHz to 6 GHz Frequency
- 500 watt max power
- Insertion Loss: < 1 dB
- Phase Balance: ± 2.5 degrees
- Amplitude Balance: ± 0.25 dB
- Isolation: >10 dB

Applications:

- Communications Systems
- Power Combining
- Broadcasting
- Amplifier Systems
- Wireless Infrastructures
- Amplifier Power Combining
- Defence Applications

Configuration:

Input Connectors	N Female
Output Connector	N Female
Frequency Range	2 to 6 GHz
Design	Reactive
Number of Input Ports	4
Housing Material and Plating	Aluminum Alloy white chromate

Electrical Specifications

Description	Minimum	Typical	Maximum	Units
Frequency Range	2		6	GHz
Impedance		50		Ohms
Insertion Loss			1	dB
Output Power			500	Watts
Output VSWR			1.3:1	
Isolation	10			dB
Phase Balance		± 2.5		Degrees
Flatness		± 0.25		dB

4 Way Medium Power Broadband Combiner

From 2 GHz to 6 GHz Rated at 500 Watts

TECHNICAL DATA SHEET

AMPC 4 - 500N

Mechanical Specifications:

Temperature:

Operating Range -55 to +85 deg C

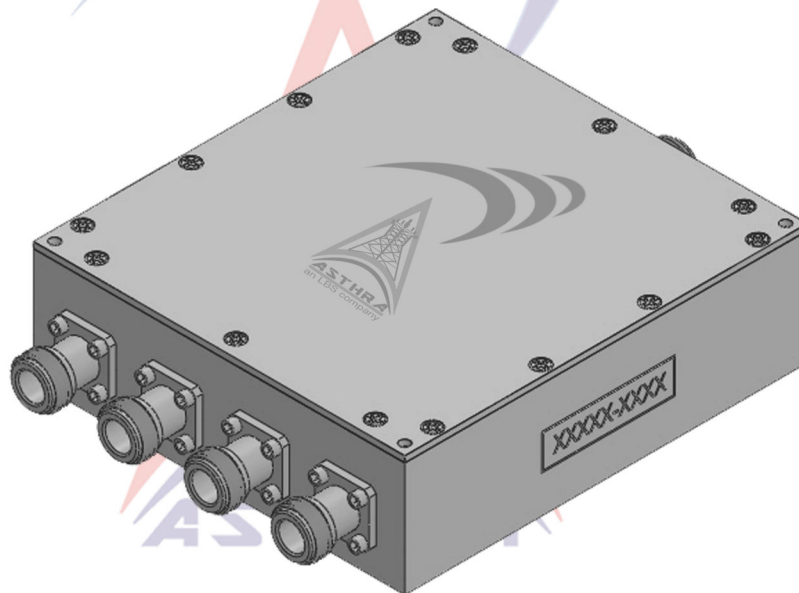
Size:*

Length 120 mm

Width 130 mm

Height 39 mm

* - Size may vary

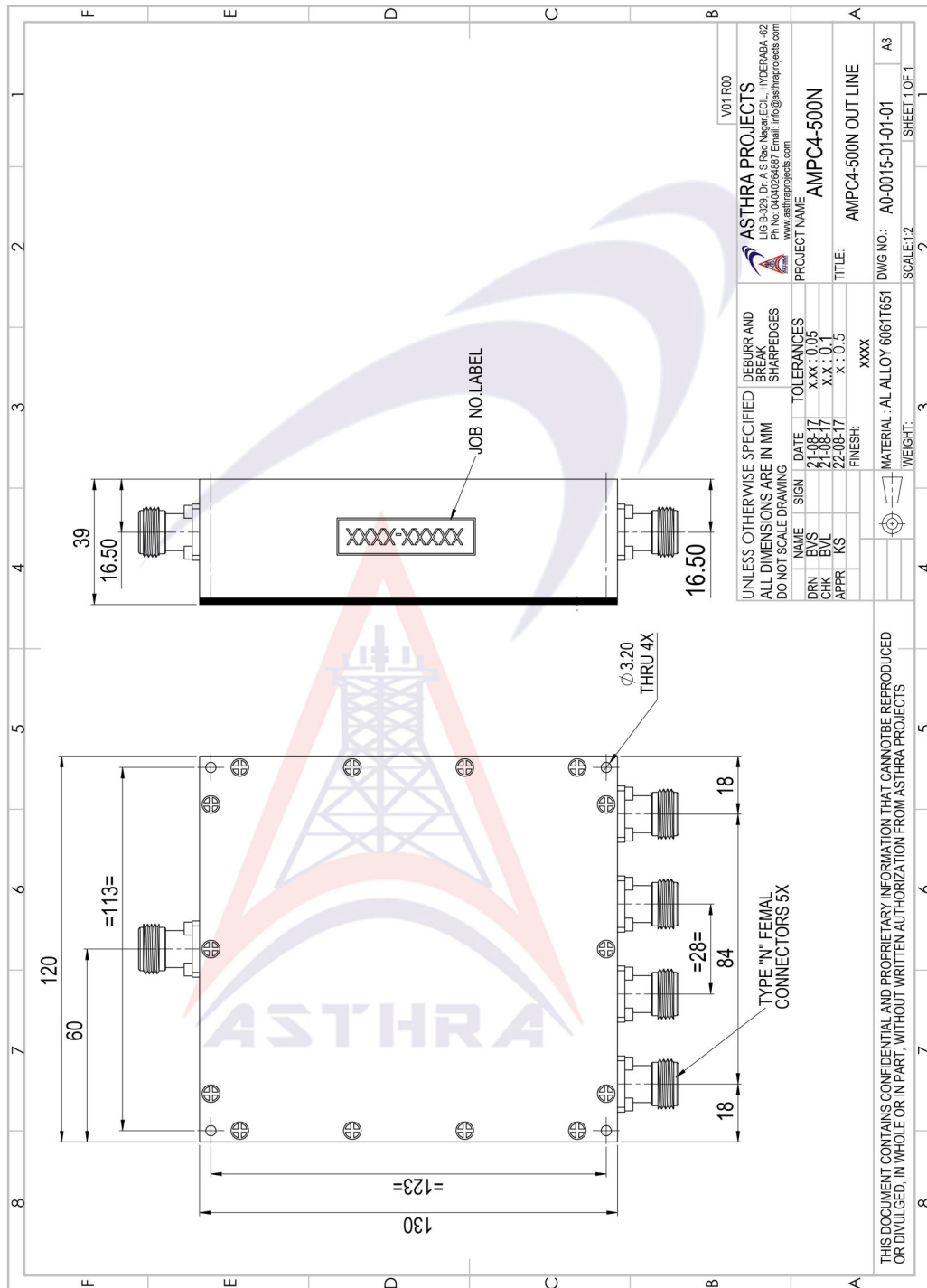


4 Way Medium Power Broadband Combiner

From 2 GHz to 6 GHz Rated at 500 Watts

TECHNICAL DATA SHEET

AMPC 4 - 500N



ASTHRA PROJECTS

#LIG- B329, Near old HMTV, Dr.A.S.Rao Nagar,
 ECIL Post, Hyderabad-500062. Ph: 040-40264887
 Mail: info@asthraprojects.com
 Web: www.asthraprojects.com